



UNIVERSITY OF MIAMI
MILLER SCHOOL OF MEDICINE

EVELYN F. McKNIGHT
BRAIN INSTITUTE



Joe Echevarria the 7th UM president

UM Business Admin degree
CEO of Deloitte LLP, global chief exec
UM Board of Trustees (2012-19)
CEO UHealth (2020-24)

<https://president.miami.edu/about/index.html>

UM Institutional Updates



Guillermo Willy Prado

Interim Executive Vice President for Academic Affairs and Provost

UM PhD (2005)
UM Vice Provost for Faculty Affairs
UM Dean of the Graduate School

<https://people.miami.edu/profile/92d9bc3613a1c7eb390af512ab416e65>

UM100
April 8, 1925 -



UM Updates

MSOM Strategic Plan Investment

- Neuroscience
- Aging
- Computational Biology



Henri R. Ford, M.D., M.H.A
Dean & Chief Academic Officer



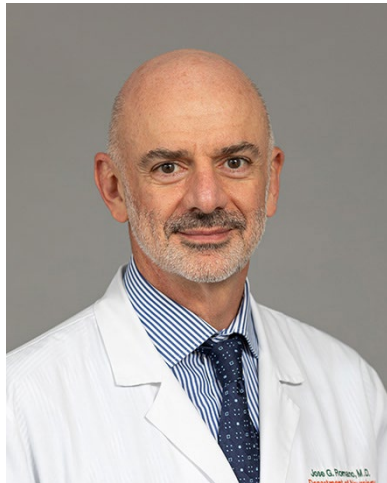
Stephen D. Nimer, M.D.
*Executive Dean
for Research*



Olveen Carrasquillo, M.D., MPH
Multi-PI & Co-Director

Erin Kobetz, Ph.D., MPH
Multi-PI & Co-Director

**K12 Career Development Program
MS Clinical Translat Investigation
Tatjana Rundek, M.D., Ph.D.**
Multi-PI & Director



New Chair of Neurology

Jose Romano, M.D.
Professor and Chairman of Neurology
Chief of Service, Neurology, Jackson Health System
JMH/UM since internship/residency (1992-)





UNIVERSITY OF MIAMI
MILLER SCHOOL OF MEDICINE
EVELYN F. McKNIGHT
BRAIN INSTITUTE

UM EMBI ORG CHART

ADMIN CORE

Stacy Merritt Director
Research Administration
Susan Fox Rosellini
Executive Director Engagement
and Business Administration

EXECUTIVE COMMITTEE

Tatjana Rundek, MD, PhD, Director
Bonnie Levin, PhD, Associate Director
Ihtsham Ul Haq, MD, Associate Director

SCIENTIFIC ADVISORY COMMITTEE

Olveen Carrasquillo, MD, MPH
Philip McCabe, PhD
James E. Galvin, MD, MPH
Miguel Perez-Pinzon, PhD
William Scott, PhD
David Loewenstein PhD, ABPP/CN

CLINICAL & TRANSLATIONAL RESEARCH CORE

BASIC SCIENCE

Miguel Perez-Pinzon, PhD
Kunjan Dave, PhD
Ami Raval, PhD

CLINICAL RESEARCH

Barry Baumel, MD
Christian Camargo, MD
Digna Cabral, Project Manager
Angela Dawson, Study
Coordinator
Melanie Taylor-John, Study
Coordinator
Botogoz Aimagambetova,
MD, Research Scientist

NEUROCOGNITIVE

Bonnie Levin, PhD
Sonya Kaur, PhD
Katalina McInerney,
PhD

NEUROIMAGING

Ihtsham Ul Haq, MD
Taylor Ariko, PhD
Yusen Wu, PhD

BIostatistics & Bioinformatics

Hannah Gardener, PhD; Emir Veledar, PhD

EDUCATION CORE & ENGAGEMENT

EDUCATION & MENTORSHIP

Christian Agudelo, MD
Education Director
Nicole Sur, MD
Neurocognitive Scholar

COMMUNITY OUTREACH

Susan Fox Rosellini
Executive Director
Engagement and Business
Administration
Marti Flothmann,
Digital Media Manager

Members

Collaborators



UNIVERSITY OF MIAMI
MILLER SCHOOL OF MEDICINE
EVELYN F. McKNIGHT
BRAIN INSTITUTE

EMBI STRATEGIC PLAN 2020-2025



Four Major Objectives:

Objective 1. Develop Scientific Program Directly Related to our Mission

Objective 2. Education & Mentorship

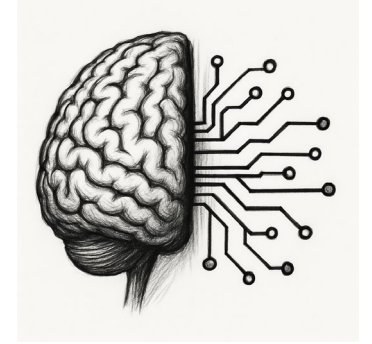
Objective 3. Promote Communication & Collaboration

Objective 4. Community Outreach

Year 4 Accomplishments by Objectives:

- 1..** Over 20 funded projects (U19, P30, R01s, Ks/Fs, FL DOH, EMBI pilots)
- 2..** 8 scholars funded (4 MDs, 2PhDs, 1MD/PhD, 1 PhD in BME)
- 3..** Collaborative research & training grants (with other EMBIs, T32s, K12s)
- 4..** Established networks of clinics, community centers, library system, social media

ARTIFICIAL INTELLIGENCE



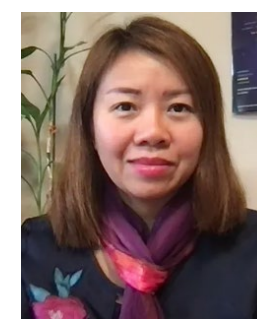
- Why we're doing this, and why now
 - **Goal:** AI can detect patterns in datasets of aging and cognitive change that are too cumbersome otherwise
 - AI isn't just large language models – machine learning approaches are germane to all data modalities (imaging, video, biomarkers)
- In collaboration with the **Frost Institute for Data Science & Computing**
- Leveraging an experienced team
- In order to:
 - Automate biomarker extraction
 - Identify risk factors
 - Predict cognitive change
 - Create a clinical to research pipeline



Dr. Yelena Yesha
Professor



Dr. Yusen Wu
Assistant Professor



Dr. Phuong Nguyen
Assistant Professor



UNIVERSITY OF MIAMI
MILLER SCHOOL OF MEDICINE
EVELYN F. McKNIGHT
BRAIN INSTITUTE

TRAINING & EDUCATION HIGHLIGHT

RESEARCH AND CLINICAL EDUCATION

- McKnight MD/PhD **Students**
- T32 **Post-Doctorate Fellows**
- McKnight **Clinical Translational Fellow**
- McKnight Neurocognitive **Scholar**
- **McKnight Neurology Resident Training in Cognitive Neurology (new curriculum)**





UNIVERSITY OF MIAMI
MILLER SCHOOL OF MEDICINE
EVELYN F. McKNIGHT
BRAIN INSTITUTE

EMBI INVESTMENT STRATEGY



PEOPLE

STRATEGIC
RECRUITMENT OF
SCIENTISTS WITH
INTEREST IN BRAIN
AGING AND AGE-
RELATED MEMORY
LOSS ACROSS
DISCIPLINES AND
TRAINING LEVELS



SHARED TECHNOLOGY & EXPERTISE

NEUROIMAGING DEDICATED
TO RESEARCH IN MED

BIO-INFORMATICS, BIG DATA
STORAGE AND MANAGEMENT



TRAINING & EDUCATION

INVESTING IN
EDUCATION BRAIN

SCHOLARSHIPS)
AND PILOTS



SPACE!

ADEQUATE SPACE
FOR CLINICAL



IMPROVEMENT OF ALL INSTITUTIONAL RESEARCH SYSTEMS

ORA, ETC.

ALL ON PAUSE !

Invest in
Science and
Technology